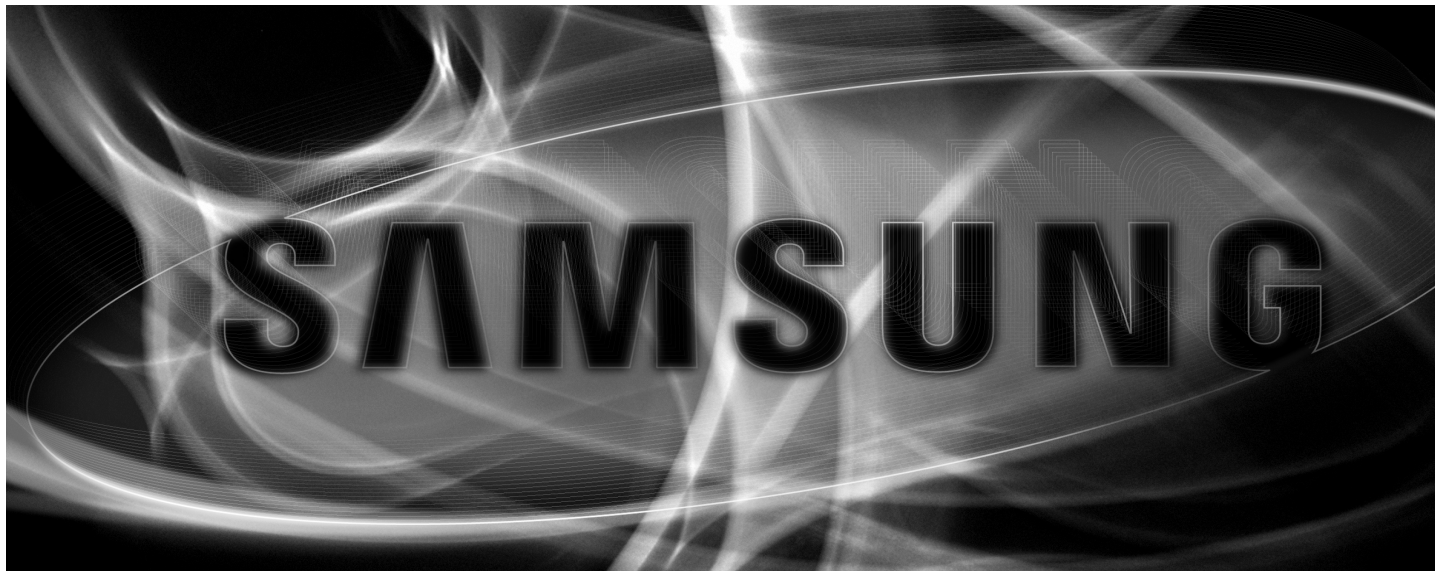

SAMSUNG TECHWIN

SAMSUNG SMARTCAM

User Manual

SNH-E6440BN



CE 0678 !




Samsung SmartCam

User Manual

Copyright

©2014 Samsung Techwin Co., Ltd. All rights reserved.

Trademark

 **SAMSUNG TECHWIN** is the registered logo of Samsung Techwin Co., Ltd. The name of this product is the registered trademark of Samsung Techwin Co., Ltd. Other trademarks mentioned in this manual are the registered trademark of their respective company.

Restriction

Samsung Techwin Co., Ltd shall reserve the copyright of this document. Under no circumstances, this document shall be reproduced, distributed or changed, partially or wholly, without formal authorization of Samsung Techwin.

Disclaimer

Samsung Techwin makes the best to verify the integrity and correctness of the contents in this document, but no formal guarantee shall be provided. Use of this document and the subsequent results shall be entirely on the user's own responsibility. Samsung Techwin reserves the right to change the contents of this document without prior notice.

SPECIFY SERVICE INSTRUCTIONS AND WARRANTY TERMS

This device complies with Part 15 of the FCC Rules.

Operation is subject to the following two conditions: (1) this device may not cause harmful interference, and (2) this device must accept any interference received, including interference that may cause undesired operation.

FCC NOTE:

THE MANUFACTURER IS NOT RESPONSIBLE FOR ANY RADIO OR TV INTERFERENCE CAUSED BY UNAUTHORIZED MODIFICATIONS TO THIS EQUIPMENT.

SUCH MODIFICATIONS COULD VOID THE USER'S AUTHORITY TO OPERATE THE EQUIPMENT.

Operational Description

The operational description shall fulfil the requirements of Rule Part 2.1033(b)(4). The rule part requires, "A brief description of the circuit functions of the device along with a statement describing how the device operates. This statement should contain a description of the ground system and antenna, if any, used with the device".

The above requirement has been further interpreted by the FCC to mean that the description shall:

- be an operational or technical description of how the device operates, is modulated and meets requirements;
- describe the EUT completely. What is it (in plain English as well as technical terms)? Give a clear, concise functional description of device operation.
- always describe the signal, such as modulation type, pulse repetition rate, signal type and information being sent. Describe all modulation types and all data rates.

Instructions & Warranty

The manufacturer is not responsible for any loss or radio/TV interference caused by unauthorized modification of the product.

Such modification will void the warranty of the product as well as the user's right of use.

WARNING

- The product must be assembled and installed by an adult.
- Before using, read all instructions on this manual thoroughly and follow operational instructions, warnings on this manual and printed on the product.
- To avoid entangled power cord, do not place it around the baby bed or other infant furniture. Keep this product and its power cord out of children's reach.

Contents

GETTING STARTED

| | |
|------------------------------|---|
| Features | 4 |
| What's Included | 5 |
| Part Name and Function | 6 |

INSTALLATION & NETWORK CONNECTION

| | |
|--------------------------------------|----|
| Installation | 8 |
| Network Connection and Settings..... | 10 |

MONITORING

| | |
|--------------------|----|
| Registration | 12 |
| Live Video | 17 |
| Setup | 20 |
| Event Alarm | 27 |
| Playback | 27 |
| Information | 28 |

APPENDIX

| | |
|-----------------------|----|
| Specifications | 30 |
| Troubleshooting | 33 |

- Especially, the power cord should be installed carefully while keeping it out of children's reach.
- Never use the product near bath tub, sink, washing machine and in wet basement to avoid moisture.
- The product is designed for outdoor use.
- The product is not designed for medical monitoring, and requires a grown-up's protective supervision on its use.
- To avoid overheating of the product, do not expose the product to direct sunlight; do not install or use near a heat source such as heater, radiator, cooking devices (ex: electric stove or oven) and other warming devices (ex: audio amplifier, TV, etc.).
- Make sure to keep ventilated while using the product.
Avoid pillar or furniture that may block ventilation, when installing the product.
- Make sure to use the power adaptor provided. If used with unidentified adaptor, it may damage the product. The power adaptor must be used with regular household electric supply.
- Avoid sharp, pointed objects around the adaptor's cable, not to damage the cable.
- Be warned and never hold the cable's stripped part when connecting / disconnecting the adaptor to/from the wall outlet.
- To avoid entangled cable lines, avoid using cable extension for adaptor's power cord.
- Do not use the camera cable for other purposes.
- Install the camera cable out of the reach of children.
- The product's servicing is allowed only to authorized Samsung Techwin's service personnel.
- When using the product for children's care, be careful to keep the product out of children's reach.
- The product partially contains component which might cause respiration difficulty. Accessories and small parts of the product should be stored keeping out of children's reach.
- The product is not designed to replace responsibility of human supervision on children.
- The product is not equipped with device of immediate notification to adult with accidental/sudden children's move; it requires periodic checks and human supervision.
- This appliance and its antenna must not be collocated or operation in conjunction with any other antenna or transmitter. A minimum separation distance of 20 cm must be maintained between the antenna and the person for this appliance to satisfy the RF exposure requirements.
- Please note that the content of a micro SD card used for other purposes may be deleted when it is mounted in the camera.

GETTING STARTED

01

Features

What's Included

Part Name and Function

Power Supply

Network connection

Features

- **Easy to install**
 - Simply visit the home page (www.samsungsmartcam.com) and download and install the program without a separate installer program.
- **Remote monitoring**
 - Whenever and wherever if you are in the Internet enabled environment, remote monitoring is ready for you.
 - PC, laptop or smart phone can be used for monitoring.
- **Real-time alarm**
 - When a motion and sound are detected, your smartphone will generate real time alarms.
- **Saving in SD card**
 - When an event occurs, the user can save the video in their SD card.
- **Two-way Audio**
 - You can communicate interactively using the optional speaker and microphone. However, it is available only with the smart phone. (Not applicable to the PC or laptop computer.)
- **IR LED**
 - At low illumination levels, you can use an IR LED for monitoring purposes.

4

5

6

7

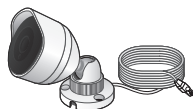
7

What's Included

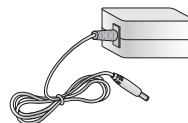
Check for components when opening the product package.



Body & Bracket



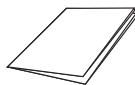
Camera & Cable(8m)



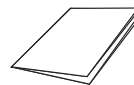
Power Adaptor



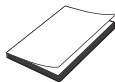
Network Cable



Quick Start Guide



Warranty Card



GPL Licence



Screw



Plastic anchor



- Please save the packaging. You will need the serial number later to register the camera.

Part Name and Function

Camera connecting terminal

The camera is connected with the RJ-12 cable.

Voice input terminal

This is used to connect a microphone.

Voice output terminal

This is used to connect a speaker.

Network terminal

This is used to connect to a wired network.

Power terminal

This is used to connect to a power adapter.



Wi-Fi Direct button

This connects the camera and smartphone wirelessly using Wi-Fi.

Power / Network status LED



Initialization button

This initializes the camera's settings. The system will restart when the button is pressed and held for 10 seconds.

Micro SD camera insert



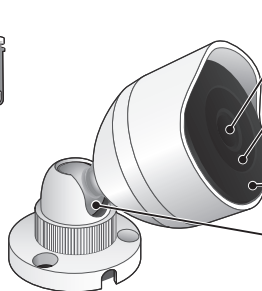
Camera lens

Illumination sensor

This detects the brightness of the area around the camera. It may be changed to night vision mode depending on the detection result.

Internal IR LED for nighttime identification

Angle adjusting hinge

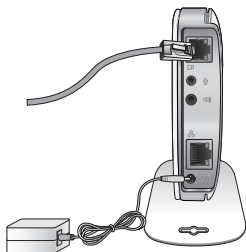


Power Supply

Plug-in the camera power adaptor to the wall outlet and connect the camera as shown.



- Make sure to use the provided power adaptor. If you use an adaptor other than the power supply adaptor provided in our package, the product may not operate properly.
- It will take about 1 min for the camera to boot-up completely.
- When the camera has finished turning on, the LED lamp turns red and starts blinking.



Network connection

Connect the provided network cable to the camera's network terminal.

For further details on network configuration, refer to "**Network Connection and Settings**". (Page 10)

LED status

LED indicator shows operational status with colors.

Refer to table below for detailed meaning of the LED indicator.

| Color | Status |
|---------------|---|
| Red | Booting up |
| Red Blinking | Booting completed / Establishing network connection |
| Blue Blinking | Connecting to the network. |
| Blue | Local connection established |
| Green | Connection to server completed / Normal operation |
| Yellow | WiFi Direct is operating. |
| Magenta | Updating firmware |

INSTALLATION & NETWORK CONNECTION

Installation

Precautions

1. Install the camera in a place where the Wi-Fi signal can be reached and without interference.
2. Keep it away from humidity such as around the humidifier.
3. Keep it away from direct sunlight, strong light or dust; install it in a place with clear view.
4. Do not install it in a place where there are a lot of obstacles.
5. Keep the lens clean at all times.
Wipe off the dust with a soft cloth.

Installation

8

Precautions

8

Assembly

9

Camera installation

9

Network Connection and Settings

10

Precautions

10

Connecting via network cable

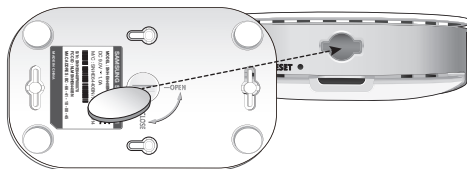
10

Wi-Fi connection setting

11

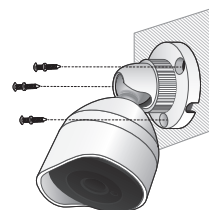
Assembly

1. Match the grooves of main body and bracket.
2. Turn the screw to **[CLOSE]** using something that is not sharp (for example a coin), to fasten the main body and bracket.
 - Turn the screw to **[Open]** to separate the main body and bracket.



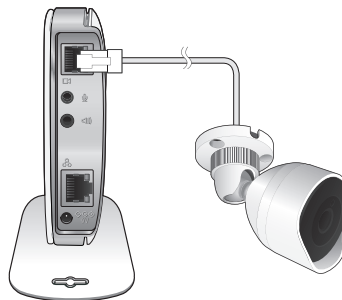
Camera installation

1. Select the location to install the camera.
2. Mount the camera on a wall or ceiling using the enclosed installation screw.



Connecting the camera to the main body

Connect camera cable to the **[CAM]** terminal on the side of the main body.



Adjusting camera angle

Adjust the lens to face the desired area to monitor.

Network Connection and Settings

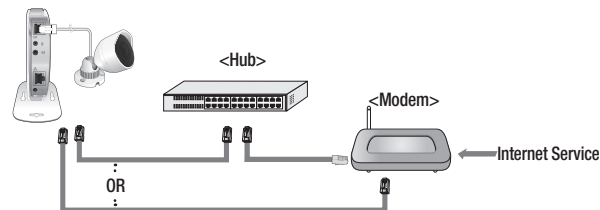
Precautions

- The wireless network access may fail, depending on the communications environment.
- For details about the network settings and password, contact your network administrator or service provider.
- For a specific Internet service requiring user authentication, you may not access the service. If this is the case, contact the service provider.
- Do not access the unauthorized network.
- The farther the distance from the Wireless Access Point, the longer time the network connection may take.
- If you fail to access the selected wireless network, try a different Wireless Access Point to make access.
- For more information about the router or the wireless connection, refer to the documentation of the router or contact the router manufacturer.
- If the camera is connected to a multiple-Wireless Access Point network environment, some video packets may be lost, depending on the network traffic load.
- According to the network policy (blocking UDP) of the service provider, the video transmission can be limited to 7 minutes. For more details, refer to the descriptions on page 19, <Relay Mode>.
- In addition to the above two situations, you may encounter a network delay or interruption due to the network conditions.
- Some hubs can have compatibility issues.

Connecting via network cable

If you do not have a Wireless Access Point, you must connect the camera using LAN cable directly to your home router.

1. When you apply the power, the power status LED is lit red, and it will change to red blinking when the booting is completed.
2. Connect the network cable to the camera and to the home router as shown below.



3. The status LED will become steady blue once the camera is connected to the router. (may take up to 30sec). If the status LED (blue) is not lit, repeat steps 2 through the end and check it again.
4. The status LED will become steady green once the camera is connected to server.

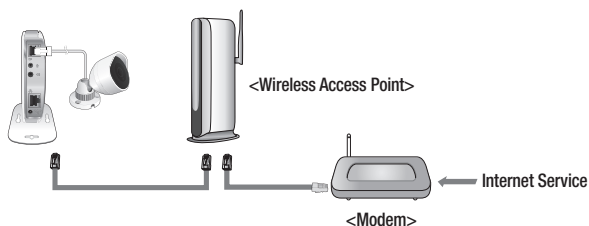


- It is recommended to set the router to DHCP(Dynamic Host Configuration Protocol) server.
If you want to use static IP address, please refer to <Wired Network> on page 21.
- If the router's UPnP is not set, then you might be connected in relay mode.
The settings may differ depending on the connected Broadband Router model.
For more information, refer to the user manual of the applicable router.

Wi-Fi connection setting

If you want to connect a camera to Wi-Fi, first connect the network cable and try to make a connection to the Wi-Fi network.

1. When you apply the power, the power status LED is lit red, and it will change to red blinking when the booting is completed.
2. Use the network cable (LAN cable) to connect the LAN port of the unit to the LAN port of the Wireless Access Point.



3. Register and select the camera according to guide of 03. Monitoring.
4. Set your wireless network environment using the guideline **<Wireless Network>** on page 22.



- If you want to connect your camera to Wi-Fi, you need a hub that supports wireless networking.
- Using the camera's Wi-Fi Direct function, you can easily make a Wi-Fi connection from your mobile phone.
- When the wireless network settings are completed, remove the LAN cable.
- If you fail to connect to the Internet service, contact the service provider for details.

MONITORING

03

| | | | |
|--------------------------|-----------|--------------------|-----------|
| Registration | 12 | Event Alarm | 27 |
| Web browser requirements | 12 | | |
| Starting SmartCam | 12 | | |
| Live Video | 17 | Playback | 27 |
| Monitoring options | 18 | | |
| Setup | 20 | Information | 28 |
| Basic Info | 20 | My Account | 28 |
| Network | 21 | Support | 29 |
| Time | 23 | | |
| Alarm & Notification | 24 | | |
| Alarm Schedule | 25 | | |
| SD card | 26 | | |

Registration

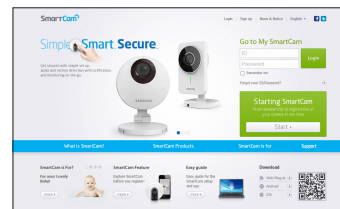
Once you register the product with the site, you can monitor the camera video on the PC or laptop computer.

Web browser requirements

| Windows | Mac |
|---|--|
| Windows XP, 7 supported | Mac OSX 10.7 Lion or higher is supported |
| - Internet Explorer 9 or higher (The 64-bit is not supported.) | - Safari |
| - Firefox | - Firefox |
| - Chrome | - Chrome |

Starting SmartCam

1. From your PC, launch your web browser.
2. Go to <http://www.samsungsmartcam.com>.
3. Select preferred language.
4. Click <Sign up> or <Starting SmartCam>.



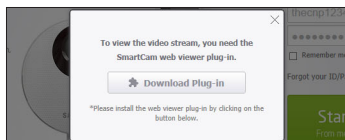
❖ Plug in installation

You need to install your plug in to automatically search for cameras connected to the network and view the video in your camera.



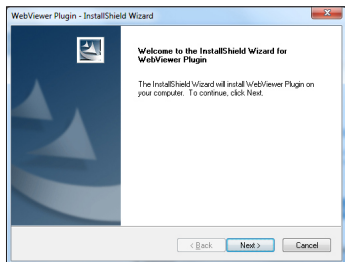
- If you login or click **<Starting SmartCam>** in a PC where the plug in is not installed, the installation message window will pop up.
- When you install the plug in, the web browser will be terminated and you need to launch it again.

- 1) Click **<Download Plug-in>**, run the setup file.

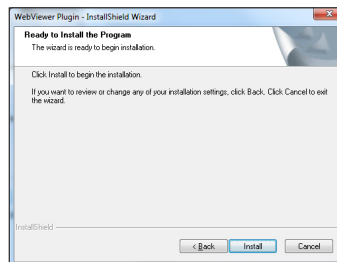


For Windows

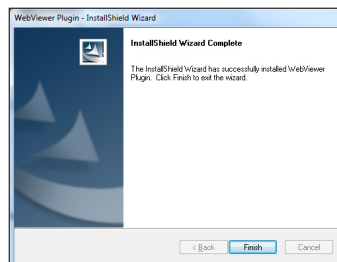
- 2) Click **<Next>**.



- 3) Click **<Install>** to begin the installation.

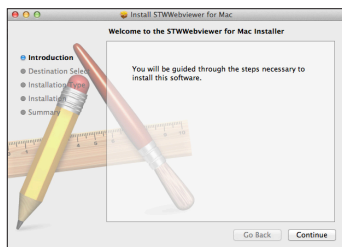


- 4) Installation has completed.

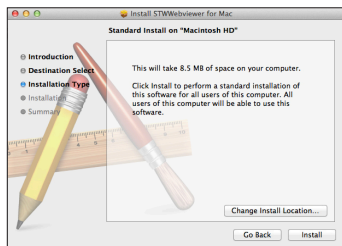


For Mac

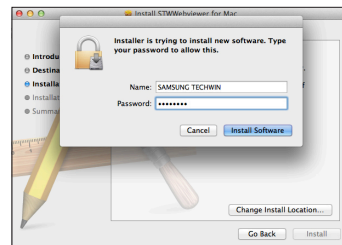
- 2) Click <Continue>.



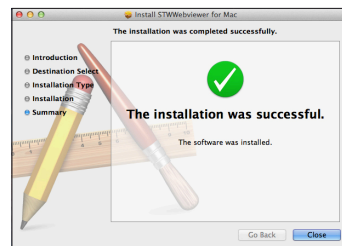
- 3) Click <Install>.



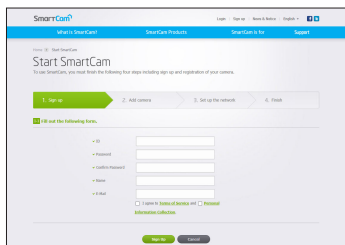
- 4) Enter MAC PC password and click <Install Software>.



- 5) Installation has completed.



5. Enter the requested information, and click **<Sign Up>**.



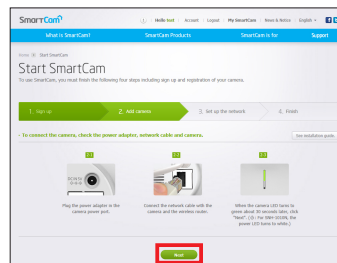
- ID : Using alphabetical characters and numbers, make a combination using 8 to 14 letters.
- Password : To strengthen security, create a password with a combination of special characters, numerals and English letters.



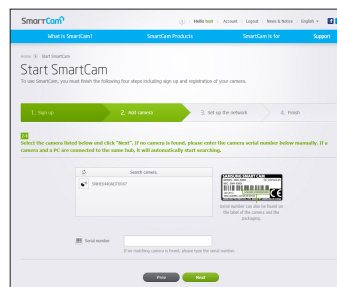
- Length and other restrictions of password.
 - A combination of English letters/numerals: 10 digits or more
 - The password must not be identical to your ID.
 - No simple repetitive pattern must be used.
e.g., 1212abab,azxsazxs
 - You cannot use 4 or more consecutive letters.
e.g., 1234, abcd
 - You cannot use 4 or more consecutive qwerty keyboard letters.
e.g., asdf, 7890
 - You cannot use any letter 4 consecutive times.
e.g., !!!!, 1111, aaaa

- Confirm Password : Please enter the password again for confirmation.
- Name : Enter the user name.
- E-mail : Please make sure you enter correct email address as you will have to use the email address to receive temporary ID/password when you lost your user ID or password.

6. According to the network connection and setting, click **<Next>** when the camera LED turns into green.

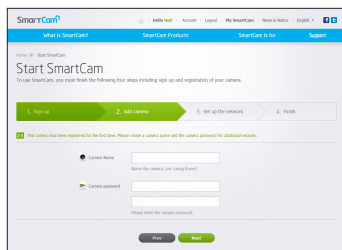


7. Select the serial number of the camera to be added from the camera search list. If the camera is not found, enter the serial number manually.
8. Click **<Next>**.



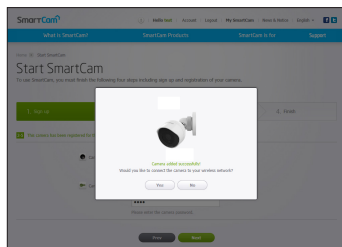
- Serial number can be found the label on the side of the packaging or on the rear of the product.
- The computer and the camera has to be on the same network router to auto detect the cameras.

9. Create <Camera Name> and <Camera password>.
10. Click <Next>.

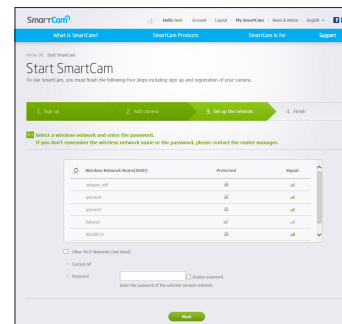


- The camera password is used to block the unauthorized access to your camera.
- Create camera password using alphanumeric characters between 1 to 8 without any space.

11. After adding the camera, click <Yes> in the wireless network setup pop-up window.

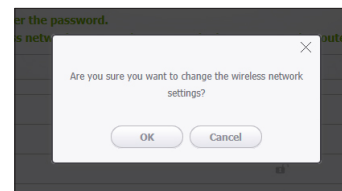


12. Select your Wireless Network from the list.
13. Enter the password of your Wireless Network and click <Next>.

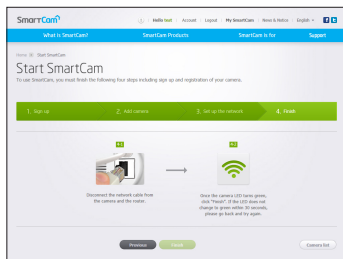


- If your Wireless Network is hidden, select <Other Wi-Fi Networks (not listed)>.
- Select <Display password> to display the password.

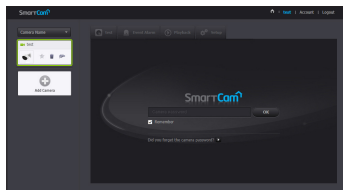
14. Click <OK>.



15. Unplug the network cable from the camera and the router.
16. Click <Finish> if the <Finish> button is activated.



17. Once the camera is successfully registered, you can check the camera in the camera list.

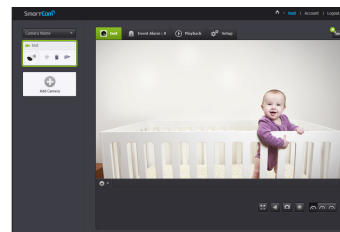


Live Video

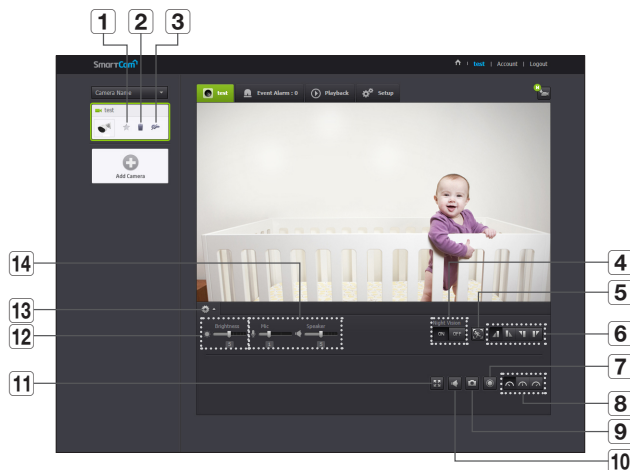
1. Select a camera from the camera list at the upper left hand of the screen.




- The gray icon indicates the camera is inactive so you cannot monitor it right now.
2. Enter the camera password and click <OK>.
- Check on <Remember> to access your camera without entering the password next time.
 - If you want to change the Camera password, please refer to <Basic Info> on page 20.
3. Live video will be displayed on the screen.



Monitoring options



| Item | Description |
|---|--|
| 1 Default Camera | Set the default camera to monitor in the camera list. |
| 2 Delete Camera | Delete the registered camera. |
| 3 Cancel remembering camera password | Cancel remembering the camera password. |
| 4 Night Vision | If Night Vision is set <ON>, it will automatically switch to black and white mode in the dark condition and then the IR lamp will automatically operate. If Night Vision is set <OFF>, it does not switch to night vision mode and it will operate in color mode. |
| 5 Motion zone setting | It detects motion within the range set by a user. |

| Item | Description |
|-------------------------------------|---|
| 6 Flip | You can flip over the video image. |
| 7 Manual recording | A user can directly save videos in their SD card. <ul style="list-style-type: none"> If there is an ongoing event now or overwrite to SD card is not checked, and there is storage space of 10% remaining, you cannot perform manual recording. If you move the page or turn off the browser without turning off the manual recording button, it will be saved for a max of 30 seconds and manual recording will be finished. |
| 8 Network Speed | Set the network speed (low/mid/high). <ul style="list-style-type: none"> If the bandwidth provided by your internet service provider is smaller than the recommended value, then the video might get fuzzy or temporary disconnections or delays in the live video may be caused. |
| 9 Capture Image | Live video is saved as one image. |
| 10 Sound | When enabled, you can hear what's happening around the camera. <ul style="list-style-type: none"> Audio is only recorded in the micro SD card when the microphone is connected to the main body. Some internet service providers do not support audio outputs in relay mode. |
| 11 Full screen | The video is displayed on the full screen. <ul style="list-style-type: none"> The system supports Internet Explorer only. If you double-click the screen, the full screen mode is terminated. |
| 12 Brightness | You can adjust the brightness of the screen image. |
| 13 Hide/unhide detailed menu | Click on the [] icon to unhide or hide detailed setting menu. |
| 14 Audio | Adjust the volume of the microphone and speaker connected to the camera. (The microphone and speaker are sold separately.) If you set the mic to zero, you will hear no live sounds or audio events. NO recording will be done in the SD card. Note that the Two-way audio transfer function is available only with the smart phone application. |


❖ Network Speed

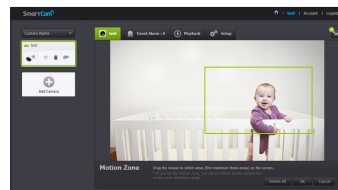
| Profile Name | Resolution | Frame rate | Recommended bandwidth |
|--------------------|----------------|------------|-----------------------|
| Low Speed Network | VGA | 20 fps | 0.9Mbps |
| Mid Speed Network | HD(720P) | 15 fps | 1.2Mbps |
| High Speed Network | Full HD(1080P) | 20 fps | 3Mbps |



- What is relay mode?
If the network condition is unstable, the camera cannot make a normal connection (P2P), so it will set up a connection in relay mode. In this case, you will see the video for the first seven minutes only.
- Relay mode is added feature where the video from the camera is transmitted to Samsung server then retransmitted to the user's computer.
- If you have trouble connection to the camera, visit "<http://www.samsungsmartcam.com>", go to support page, and refer to "Troubleshooting" on it.
- It is recommended to use one browser at one time.
- If simultaneous accesses are made to the high speed network, video quality may be low.
- The Night Vision video produces a different visibility according to the distance between camera and subject.

❖ Motion detection area setting

- 1) Click the <  > icon.
- 2) Drag it to the screen to set the detection area.



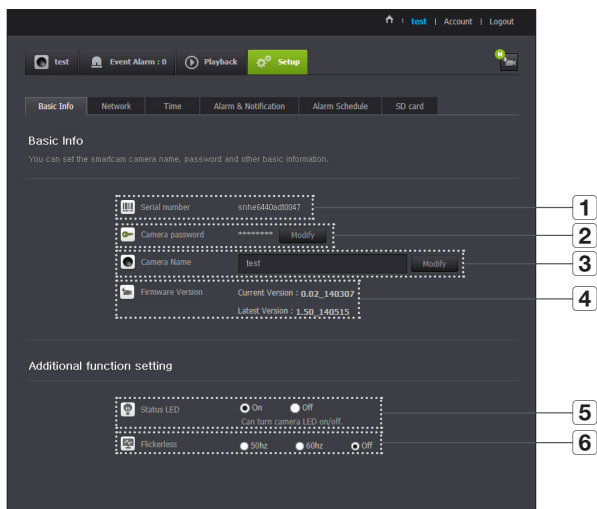
- 3) Click on <OK>.
If you want to delete the set area, click on <Delete All>.



- The <Motion Detection> function needs to be activated in order to use the motion zone function.

Setup

Basic Info



| Item | Description |
|--------------------|--|
| 1 Serial number | You can confirm the serial number. |
| 2 Camera password | Click the <Modify>, you can change the Camera password. Enter the current camera password, and type a new Camera password. |
| 3 Camera Name | Click the <Modify>, you can change the camera name. |
| 4 Firmware Version | You can check the current version and the latest version of your camera S/W. |
| 5 Status LED | You can turn on/off the LED in your camera. |
| 6 Flickerless | You can reduce the occurrence of screen shaking due to the frequency mismatches with the neighboring lighting. |

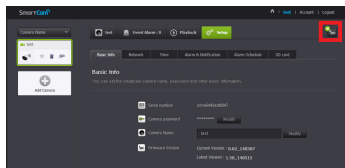


- If you change the camera password, you will be logged out and return to the camera password input page.
- Keep the camera password in a safe place as it is used for viewing the live screen of the camera or for changing the display settings.

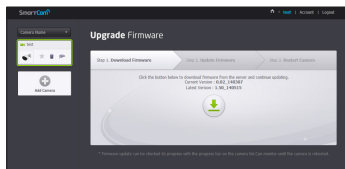
❖ Firmware update

If the currently used S/W is not of the latest version, update it.
If you are using the latest version, then the firmware will not be activated.

- 1) Click <Firmware>.



- 2) Click the <Download> icon to update the firmware.



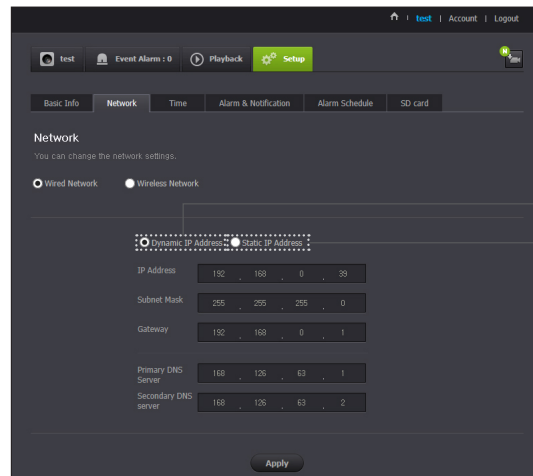
- 3) When the firmware update is finished, the camera will reboot.



- If you want to update the firmware, it is recommended to use a wired network connection.
 - If the power goes off during updates, it may not operate properly.
 - The duration of the firmware update depends on the size of the firmware file and the network connection speed.
- !
- Do not disconnect the camera from power or the Internet during a firmware update, as this may damage the system.

Network

<Wired Network>



| Item | Description |
|----------------------|---|
| 1 Dynamic IP Address | If you select <Dynamic IP Address>, the IP address will be obtained automatically. |
| 2 Static IP Address | You must manually provide the information of: IP address, subnet mask, gateway, DNS server address. |



- If any of the manual settings is wrong, the network settings will not be applied.
- If you have both cable and wireless network connections simultaneously, the cable network connection is prioritized.
- If you switch from the current wireless connection to the cable connection, the network will switch to cable connection accordingly.
- For more information about the router or the wireless connection, refer to the documentation of the router or contact the router manufacturer.

<Wireless Network>

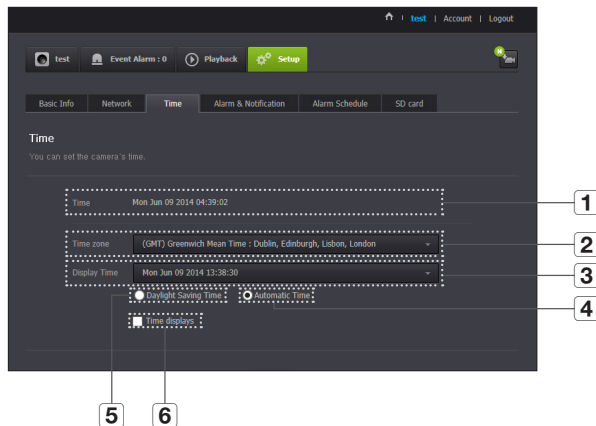


| Item | Description |
|---------------------------------|--|
| 1 Wireless On/ Wireless Off | You can select to activate or deactivate the wireless network connection. |
| 2 AP (Access Point) list | You will see a list of APs (Access Point) available. Select a desired one from the list of APs (Access Point). |
| 3 AP (Access Point) password | If you select a secured AP (Access Point), you must enter the password before you can access the network. For the password, contact your network administrator. |
| 4 Hidden SSID | If your SSID is hidden, select the type of security you have. Enter the name of the SSID and the password. |



- If you select a non-secured AP (Access Point), you just can access the network without providing a specific password.
- If you entered a wrong password, you cannot access the network whatsoever.
- When the wireless network settings are completed, remove the LAN cable. If you do not remove the LAN cable, the wireless network will not be available.

Time

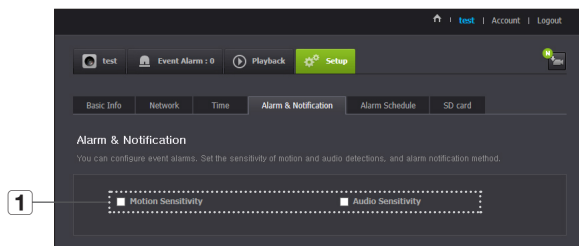


- The time will synchronize with the NTP(Network Time Protocol) server automatically. For this, Internet connection is required.
- You need to set the timezone correctly to obtain the exact time setting.
- The time displayed without Internet connection may not be accurate.

| Item | Description |
|------------------------|--|
| 1 Time | Confirm the camera's time. |
| 2 Time Zone | Select your region. |
| 3 Display Time | Select the time format displayed in time setting. |
| 4 Automatic Time | It sets camera's time automatically. |
| 5 Daylight Saving Time | Check this option if you live in a country or region where DST(Daylight Saving Time) is applied. |
| 6 Time to show | Live screen displays the time. |

Alarm & Notification

Camera has ability to send event notifications when motion or audio is detected.



| Item | Description |
|----------------------|---|
| 1 Alarm notification | <p>You can set motion or audio alerts. Sensitivity level can also be set. The higher the sensitivity, the more accurate motion and audio events can be detected.</p> <ul style="list-style-type: none"> When an event occurs, if you want to send alerts to Gmail, first log into your google account. |

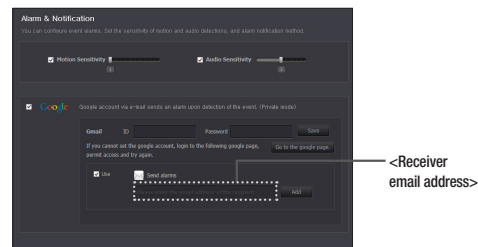


- In the following case, it may fail to derive the proper results for basic events and motion detection.
 - The object color or brightness is similar to the background.
 - Multiple movements continue occurring at random due to a scene change or other reasons.
 - A fixed object continues moving in the same position.
 - An object hides other objects behind.
 - Two or more objects overlap or one object divides in multiple portions.
 - A moving object comes close to the camera.

<Gmail> Notification

The event alarm is sent through Gmail.

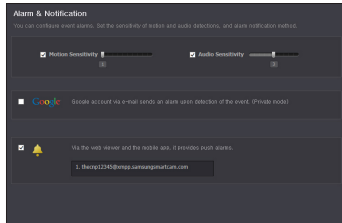
- Select the Google.
- Enter your Gmail address and password.
- Click <Save>.
- Select <Use> of "Send alarms".
- Enter your email address to receive the notification e-mail and click <Add>. Now, the receiver full email address will be shown in the List Box. If you want to register more than one email address, you can just repeat the same procedure.



- If your Google email ID/password are saved, only check "Send alarms".
- If the email address for the recipient entered is incorrect, event alerts will not be sent.
- Even if you entered a correct google account ID, if the ID/password confirmation pop up window appears, click on <Go to the google page.> and check the google account.

Push alarm Notification

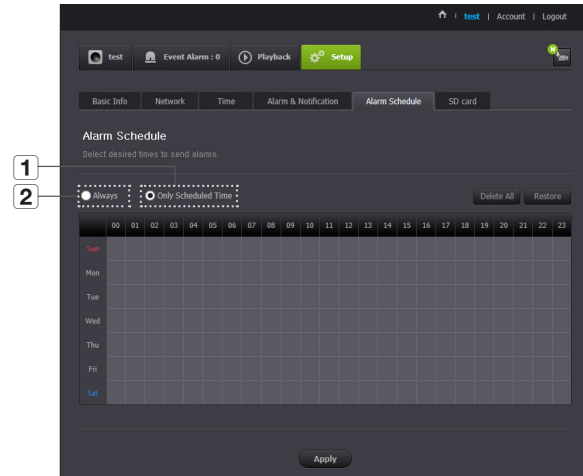
The push alarm is provided through the web viewer and mobile app in which the camera is registered.



- Push alert list shows the list of IDs of users who registered cameras.
When an alarm occurs, the web site will send push alerts to each smart phone.

Alarm Schedule

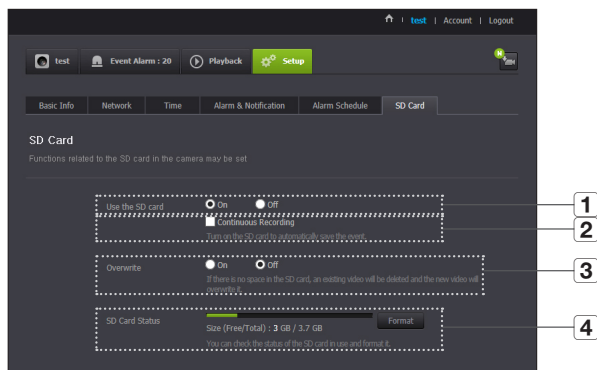
Alarms will only operate for the times selected by the user.



| Item | Description |
|-----------------------|---|
| 1 Only Scheduled Time | Alarm function will only operate for the time/day designated by the user. |
| 2 Always | Alarm function always operates. |

SD card

When an event occurs, it is saved in an SD card.

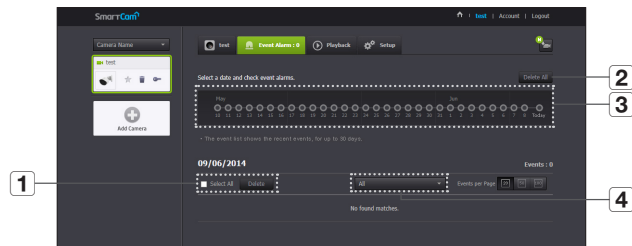


- Turn off the camera power or set it to <Off> before removing the micro SD card. If you fail to do this, the data in the micro SD camera may be damaged.
- Please note that the content of a micro SD card used for other purposes may be deleted when it is mounted in the camera.
- The following micro SD cards are recommended for this camera.
Manufacturer : Sandisk, Transcend
Recommended Capacity : 4GB ~ 32GB
Class 6 or higher, MLC type
- Micro SD card of max 32GB is supported and a FAT32 file system is supported.
- It is recommended to use the micro SD card after formatting it. Regularly formatting the memory card will help extend its life.

| Item | Description |
|------------------------|---|
| 1 Use the SD card | If you set motion/audio, video will be automatically saved in your SD card. |
| 2 Continuous Recording | Saves the video without being interrupted by events that may occur. |
| 3 Overwrite | <p>If the SD card capacity is insufficient, it will start overwriting the oldest data.</p> <ul style="list-style-type: none"> ■ When there is storage capacity of 10% remaining, the top notification window will show an alarm. |
| 4 SD Card Status | Check the remaining capacity of your SD card and delete all the data. |

Event Alarm

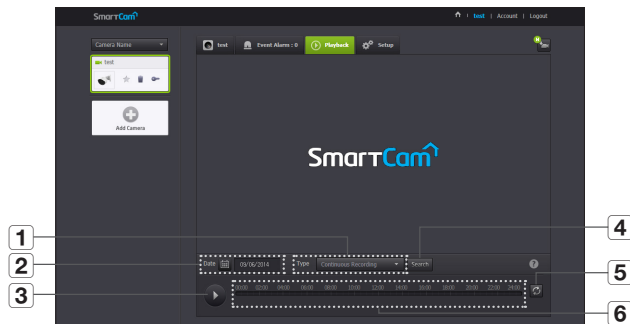
You can check the event alarm that occurred.



| Item | Description |
|--------------------|--|
| 1 Delete by dates | Delete all the event alarms on the date. |
| 2 Delete All | Delete all the event alarms for thirty days. |
| 3 Display Events | Displays the number of events occurred in the 30 day list. |
| 4 Arrange by types | Arrange the event list by event types. |

Playback

You can play the video recorded in your SD card.

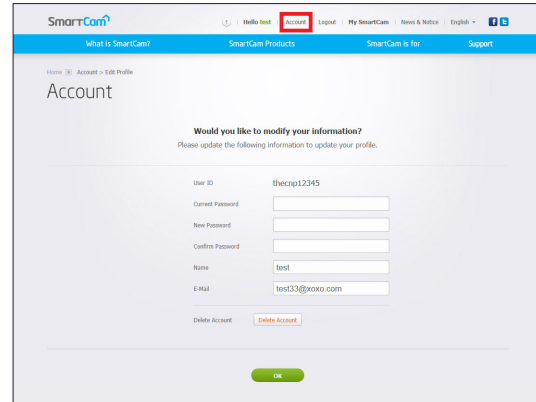


| Item | Description |
|--------------|--|
| 1 Type | Set the event type to search for during the search period. |
| 2 Date | Set the search date for the data saved in your SD card. |
| 3 Play/pause | Play and pause video. |
| 4 Search | Perform event searches. |
| 5 Refresh | Renew the events displayed in timeline. |
| 6 Timeline | Use the timeline to play the video in the desired time. |

Information



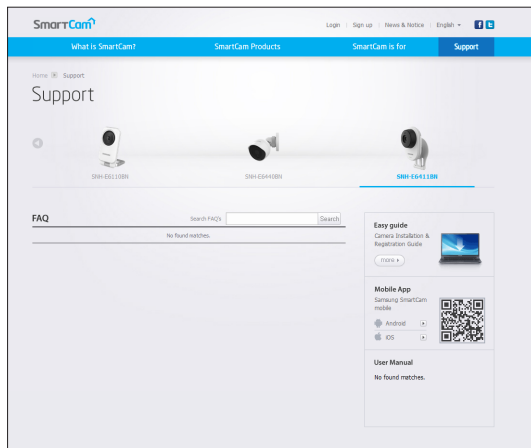
My Account



- If you want to change the member information, click on <Account>. Select the item (password, or email address) and enter your information.

Support

You can download the Samsung SmartCam mobile app and user guide.



APPENDIX

04

Specifications

Specifications
Product Appearance

Troubleshooting



Specifications

Specifications

| Item | Description |
|-------------------------------|---------------------------------------|
| OS | Linux |
| Resolution | 1920x1080, 1280x720, 640x480 |
| Max. Framerate | 1080p@20fps |
| Video Compression Format | H.264 |
| Streaming Capability | Multiple Streaming (Up to 5 Profiles) |
| Angular Field of View (D/N/H) | 128°/ 62°/ 111° |
| Low Light Performance | 0.3Lux(Color), 0Lux(Black/White) |
| WDR | N/A |
| Day & Night | True D/N Filter |
| Night vision | IR-LED, 15M |
| Digital Zoom | 4X |
| Flip / Mirror | Support |
| Motion Detection | Support |

30

30

32

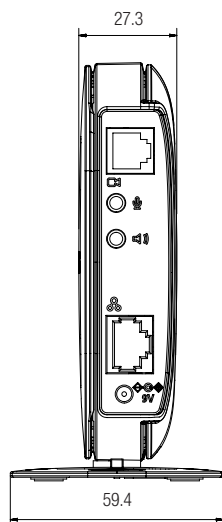
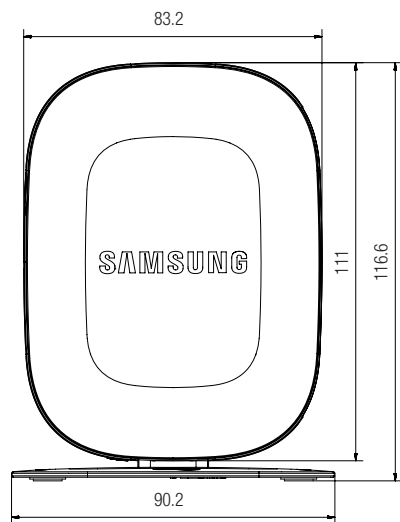
33

| Item | Description |
|----------------------------------|---|
| Audio Detection | Support |
| Audio I/O | Support (external microphone and speaker) |
| Audio Compression Format | G.711 |
| Audio Communication | Bidirectional (external microphone and speaker), Half Duplex |
| External microphone | 3.5mm Passive microphone(mono) |
| External microphone sensitivity | - 35dB ~ - 40dB |
| External microphone cable length | ≤ 8m |
| External microphone cable type | Shielded microphone cable (The microphone noise depends on the cable length and shield characteristic.) |
| Memory Slot | microSD (FAT32), Up to 32GB |
| Recording & Playback | Event recording, Manual recording, Continuous recording, Remote playback |
| Ethernet | RJ-45 (10/100BASE-T) |
| Wireless | Wi-Fi 802.11 b/g/n (2.4G Single-band) |
| WiFi Direct | Support (Push button) |
| Security | SSL (AES 256bit) |
| Max. User Access | 5 users at Unicast Mode |
| Operating Temperature / Humidity | Camera : -10°C ~ 50°C, Body : 0°C ~ 40°C / Less than 90% RH |
| Ingress Protection | IP66 (Camera part), Indoor (Body) |

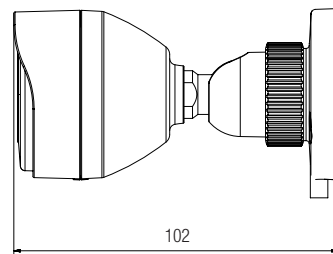
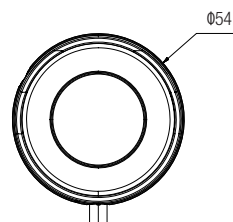
| Item | Description |
|-------------------------|--|
| Input Voltage / Current | 9V DC / 1A |
| Power Consumption | Max. 9W |
| Indication | 1 LED (Power, Status, Link) |
| Color | White |
| Dimension (WxHxD) | Camera (incl. bracket): Ø54 x H102mm, Body (excl. cradle): W83.2 × H111 × D27.3mm |
| Weight | 568g |

Product Appearance

Body



Camera



Troubleshooting

If you encounter a problem with your system, see the table below to solve the problem as quickly and easily as possible. Please follow the instruction below:

| Problem | Action |
|---|--|
| I forgot my user ID/ password. | <ul style="list-style-type: none"> - Move to "Log-in page → Forgot your ID/Password?", and enter the registered e-mail address to which we will send you the user ID and/or a new password. - It can be spammed out depending on the policy of the email server. - After logged in, it is advisable to change the temporary password provided. |
| Camera is not connected to the wireless hub. | <ul style="list-style-type: none"> - If the camera's wireless internet indication LED goes off too often, then it means that the camera installation location is not optimal for the wireless internet environment, so in this case, locate the camera close to the wireless hub and try to connect again. - Check the password for the wireless hub and try again. |
| After logged in, I failed to register the camera. | <ul style="list-style-type: none"> - Check that the serial number entered matches the label on the back of the camera. - Enter the correct password for the camera registered again and try to register the camera again. - Check the camera LED to see if it is green. If not, then check the network connection. - If you are still unable to register the camera after this, then reset the camera to factory settings and begin again. <p>(If you want to reset to factory settings, press and hold the initialize button on the back for 10 sec. Once initialized to factory settings, the camera will be restarted.)</p> |

| Problem | Action |
|--|---|
| The video from the camera is temporarily lost. | <ul style="list-style-type: none"> - The video from the camera can be delayed according to a network delay. Please check if the camera is installed in a place of proper wireless Internet communications. |
| No sound is output from the video. | <ul style="list-style-type: none"> - Click the Voice icon in the video playback page, or check if the voice is turned On in your smart phone app. - Some internet service providers do not support audio outputs in relay mode. |
| I forgot my Camera password. | <ul style="list-style-type: none"> - You must create a new camera password. - Press the initialization button on the back of the product for more than 10 seconds to reset to factory settings. - After factory initialization, when you access the camera, you can reset the password for the camera. |
| I want to change my password and/or email address. | <ul style="list-style-type: none"> - After logging in, click on the <Account>. Select the item (password, or email address) and enter your information. |
| Camera will be connected in a relay mode. | <ul style="list-style-type: none"> - Check the UPnP setting of the router. - Using a network upload speed of 1Mbps or higher is recommended. - Depending on the policy of your service provider, you can access in relay mode. |



Samsung Techwin cares for the environment at all product manufacturing stages, and is taking measures to provide customers with more environmentally friendly products. The Eco mark represents Samsung Techwin's devotion to creating environmentally friendly products, and indicates that the product satisfies the EU RoHS Directive.



Correct Disposal of This Product

(Waste Electrical & Electronic Equipment)

(Applicable in the European Union and other European countries with separate collection systems)

This marking on the product, accessories or literature indicates that the product and its electronic accessories (e.g. charger, headset, USB cable) should not be disposed of with other household waste at the end of their working life. To prevent possible harm to the environment or human health from uncontrolled waste disposal, please separate these items from other types of waste and recycle them responsibly to promote the sustainable reuse of material resources.

Household users should contact either the retailer where they purchased this product, or their local government office, for details of where and how they can take these items for environmentally safe recycling.

Business users should contact their supplier and check the terms and conditions of the purchase contract. This product and its electronic accessories should not be mixed with other commercial wastes for disposal.



SALES NETWORK

SAMSUNG TECHWIN CO., LTD.

6, Pangyo-ro 319beon-gil, Bundang-gu, Seongnam-si, Gyeonggi-do, SEOUL 463-400 Rep. of KOREA

Tel : +82-70-7147-8753, 8764 Fax : +82-31-8018-3740

www.samsungsecurity.com

SAMSUNG TECHWIN AMERICA Inc.

100 Challenger Rd. Suite 700 Ridgefield Park, NJ 07660

Customer support : +1-877-349-3149

www.samsungsv.com

SAMSUNG TECHWIN EUROPE LTD.

Samsung House, 1000 Hillswood Drive, Hillswood Business Park Chertsey,
Surrey, UNITED KINGDOM KT16 0PS

Customer support : 00800-8010-8022

www.samsungsecurehome.eu
